

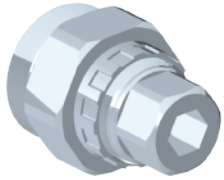


**CINCH**  
POWER METER

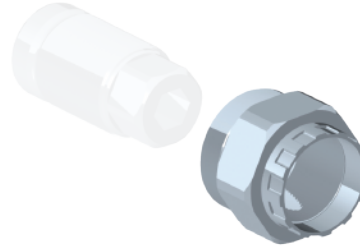
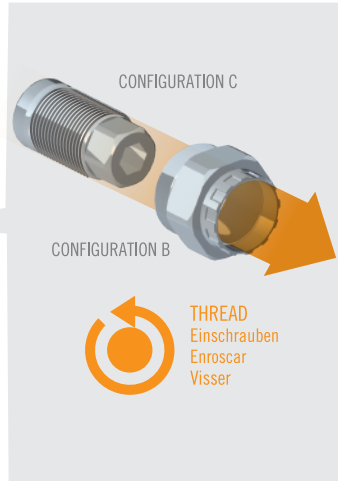
**SPINDLE INSTALLATION  
MANUAL**



CHECK [RACEFACE.COM](http://RACEFACE.COM) OR [EASTONCYCLING.COM](http://EASTONCYCLING.COM)  
FOR INSTALLATION UPDATES



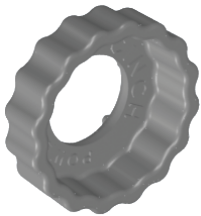
**CONFIGURATION A**  
CINCH CRANK EXTRACTOR



**CONFIGURATION B**  
CINCH POWER NDS  
CRANK BOLT ADAPTER



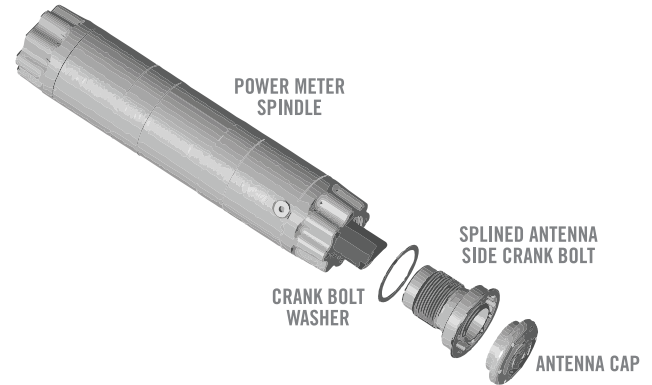
**CONFIGURATION C**  
8-16mm HEX ADAPTER



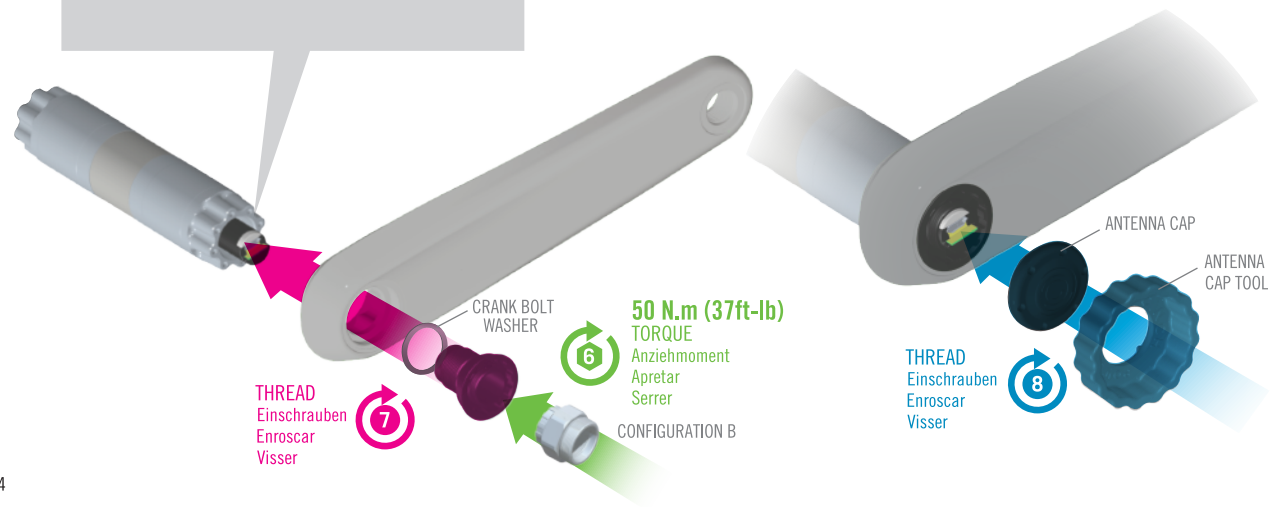
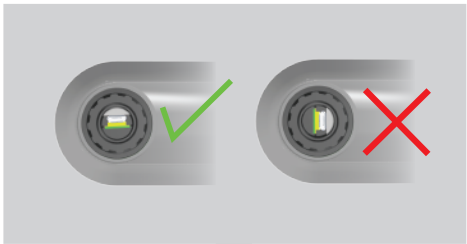
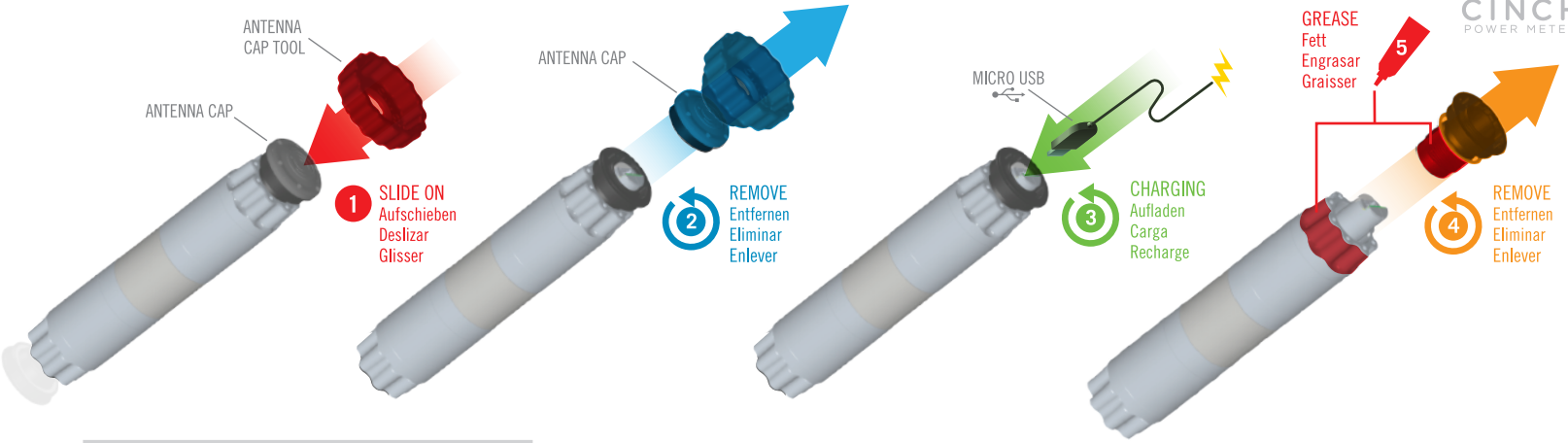
**ANTENNA CAP TOOL**



**MICRO USB CABLE**



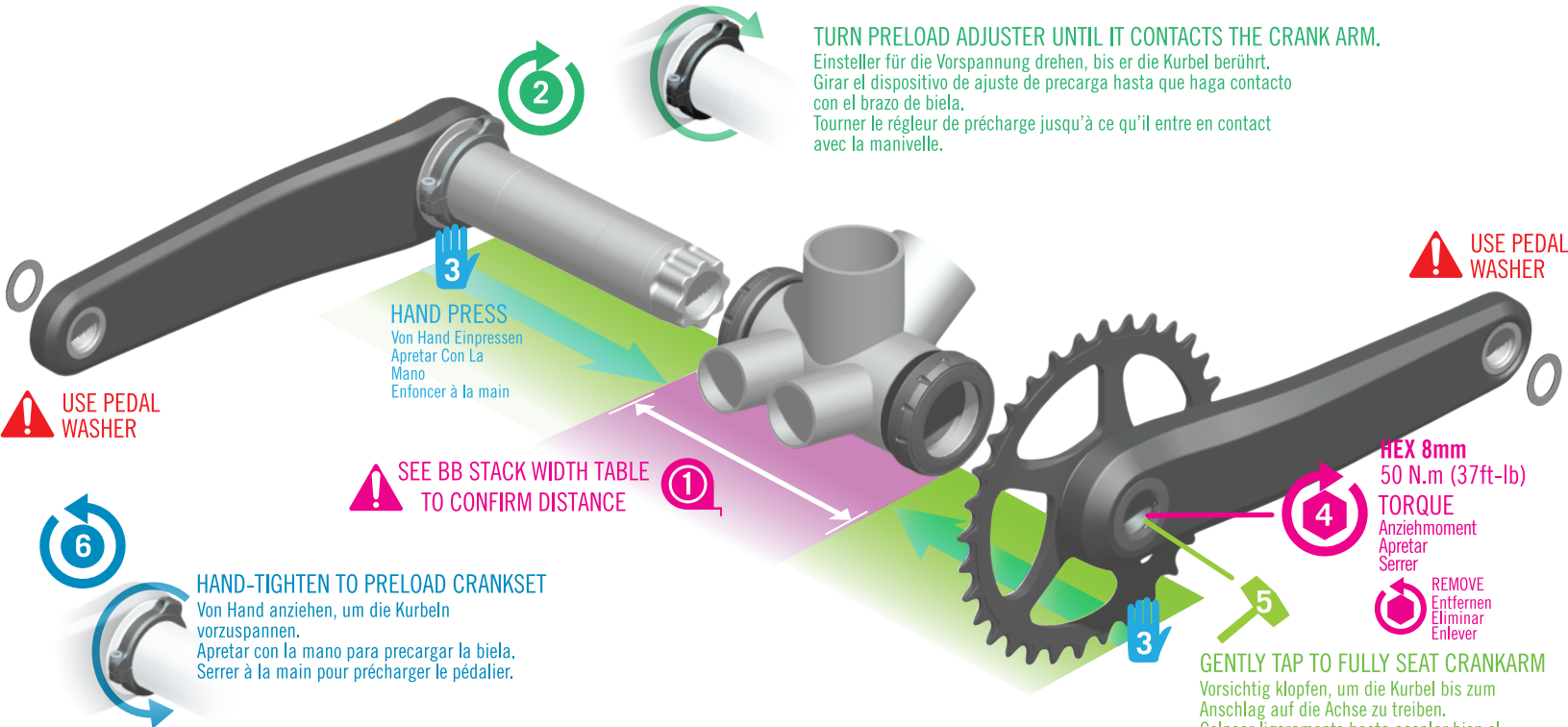
# POWER METER INSTALL



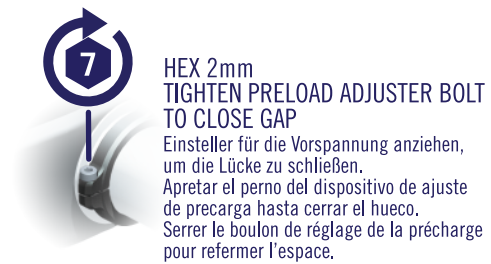
**9**

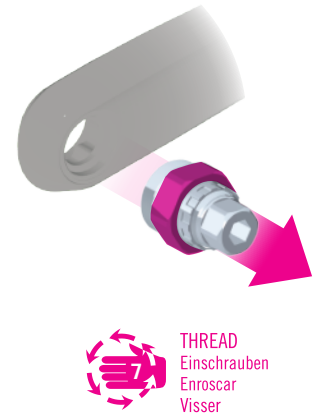
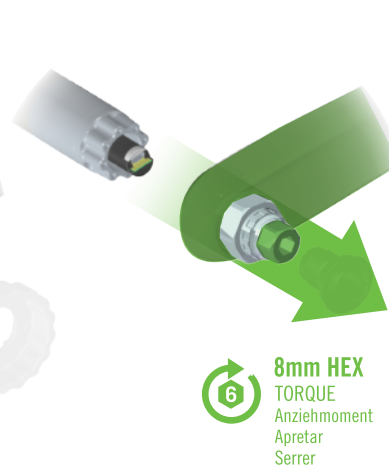
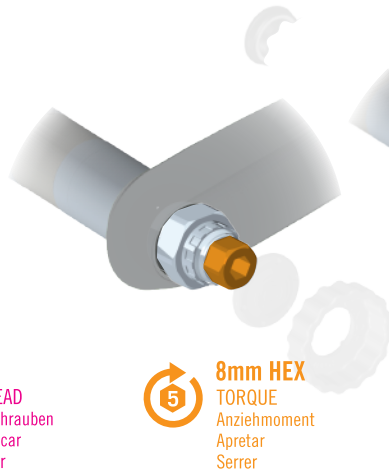
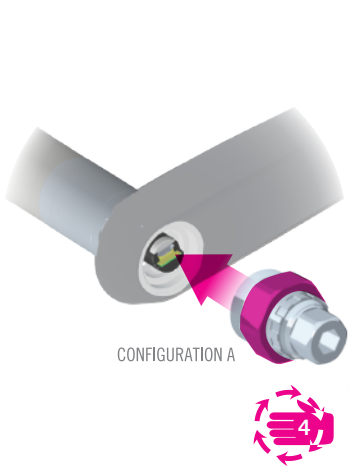
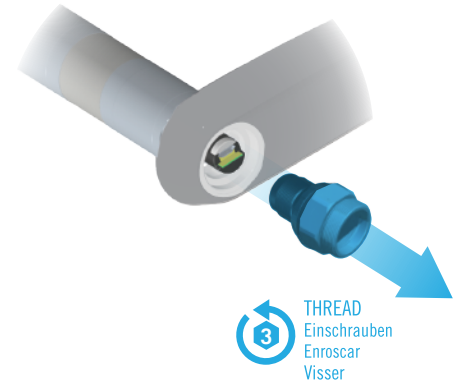
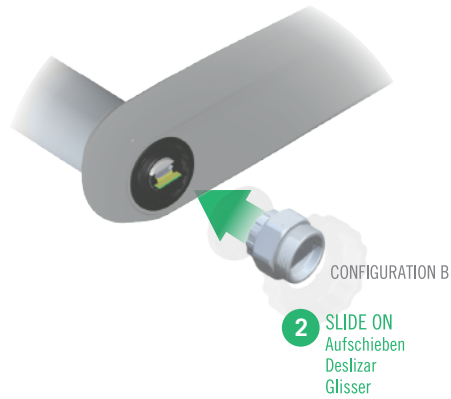
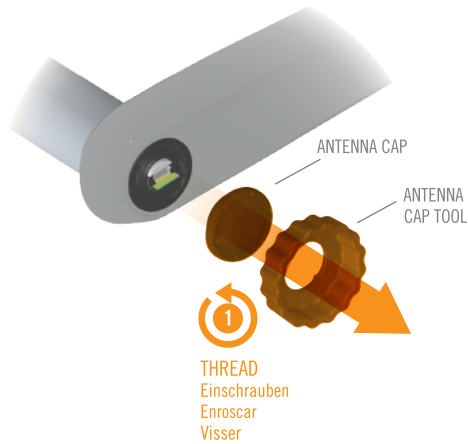
**DOWNLOAD LATEST CINCH APP FOR YOUR SMART PHONE FROM GOOGLE PLAY OR APP STORE AND USE IT TO KEEP YOUR CINCH POWER METER FIRMWARE UP TO DATE.**





**GENTLY TAP TO FULLY SEAT CRANKARM**  
Vorsichtig klopfen, um die Kurbel bis zum Anschlag auf die Achse zu treiben.  
Golpear ligeramente hasta acoplar bien el brazo de biela.  
Tapoter gentiment pour asseoir correctement la manivelle.







**CINCH**  
POWER METER

## BB STACK WIDTH TABLE

Name	Total BB Width*
OPM1730129	92.1 ± 1.0 mm
OPM1730134	98.1 ± 1.0 mm



**INCLUDING REQUIRED SPACERS.  
SEE BB INSTRUCTION SHEET.**

Einschließlich der notwendigen  
Distanzscheiben. Incluyendo  
separadores requeridos.

Ver instrucciones de pedalier.  
Incluant les entretoises nécessaires.

Consulter la fiche d'instructions  
de l'axe de pédalier

CHECK RACEFACE.COM OR EASTONCYCLING.COM  
FOR INSTALLATION UPDATES

