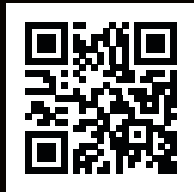


DROPPER LEVER



Traduction Française
Deutsche Übersetzung

HOPETECH.COM

hope

CAUTION: READ THIS BEFORE INSTALLING YOUR DROPPER LEVER!

Riding bicycles can be dangerous. These instructions should be read thoroughly before installation. Failure to follow these instructions before installing and using Hope Technology Components can result in severe injury or death.

BOX CONTENTS

- Dropper Lever Assembly • 1 x Bolts

TOOLS REQUIRED

- 3mm Hex • T25 Torx Driver

PRODUCT SPECIFICATIONS

- To suit cable actuated dropper posts
- Direct Mount to Tech 4/XCR/Tech 3 Master Cylinders
- Ball bearing for smooth actuation
- Adjustable reach
- Adjustable leverage

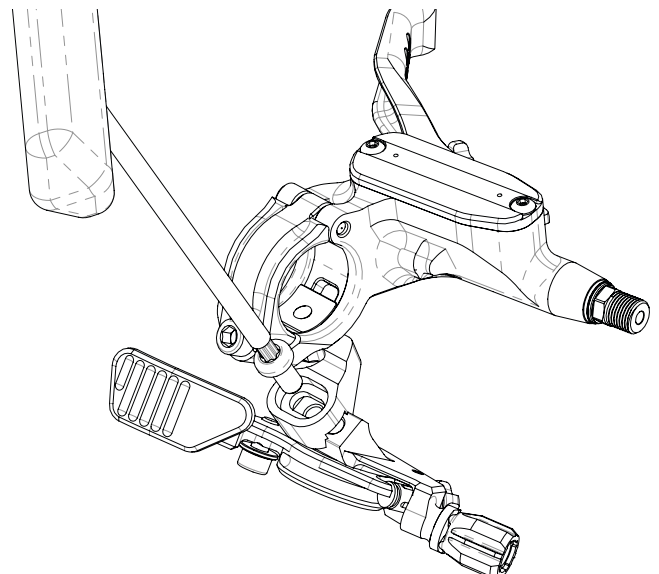
HOPE WARRANTY

All Hope Technology Components are covered for two years from original date of purchase against manufacturer defects in material and workmanship. Proof of purchase is required. Product must be returned to the original retailer to process any warranty claim. This warranty does not cover any damage caused through mis-use or failing to comply by the recommendations given in this manual. This warranty does not affect your statutory rights.

ATTACH LEVER TO BARS

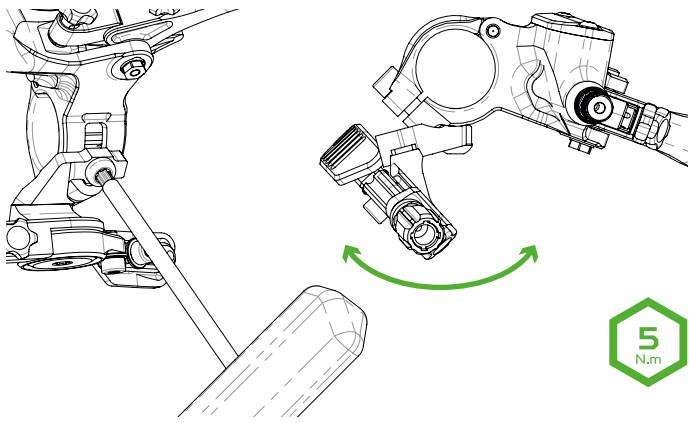
001_Hope Dropper Lever is compatible with the SRAM Shifter type interface. It will mount directly to the Hope Direct Shifter Mount or any compatible handlebar clamp. Hope Direct Shifter Mount Part # **HBSP426 RH/LH** for Tech 4 Master Cylinder and **HBSP325LH** for XCR Master Cylinder. Please consult 'Direct Shifter Mount' instructions for fitting the mount to the master cylinder.

002_Install the dropper lever onto the mount using the supplied M5 bolt and a T25 Torx driver, don't fully tighten the bolt at this point.



003_ Adjust the fore/aft position of the lever by loosening the M5 bolt on the underside of the master cylinder clamp. When the desired position is found re-tighten the bolt.

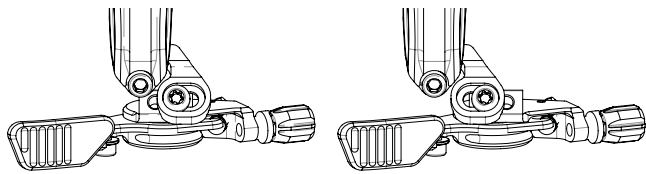
Recommended tightening torque: 4-5 Nm.



004_ Lateral position of the lever can be adjusted using the slotted hole in the direct shifter mount. Further adjustment is possible by swapping the mounting holes on the Dropper lever body. When the desired position is found fully tighten the M5 bolt.

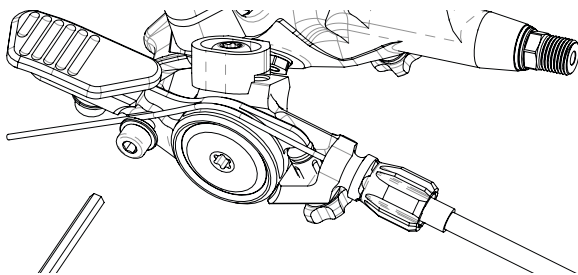
Recommended tightening torque: 4-5 Nm.

NOTE: On Tech 4 Master Cylinder a RH shifter mount can be used to give further lateral position adjustment.



ATTACH DROPPER CABLE

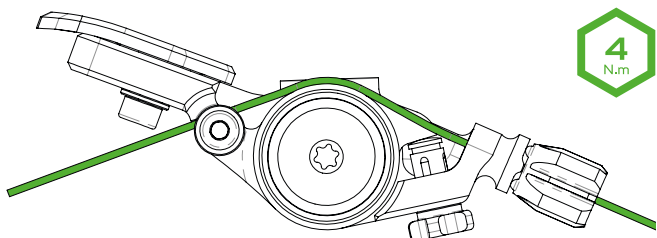
005_ Loosen but don't fully remove the M4 cable clamping bolt using a 3mm hex key.



006_ Check that the barrel adjuster and reach adjustment screw screwed all the way in, [clockwise turns]

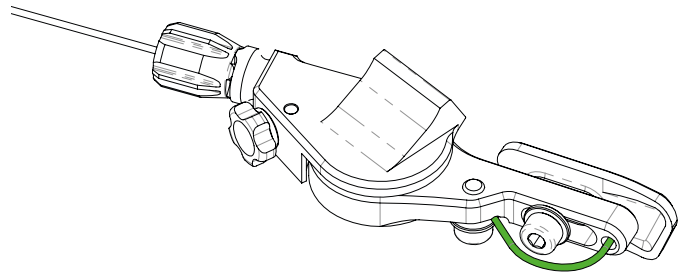
007_ Thread the dropper post cable through the barrel adjuster, around the lever and under the cable clamping washer. Pull the cable tight to remove any slack and, making sure the cable is located in the groove beneath the washer, tighten the clamping bolt.

Recommended tightening torque: 4 Nm.



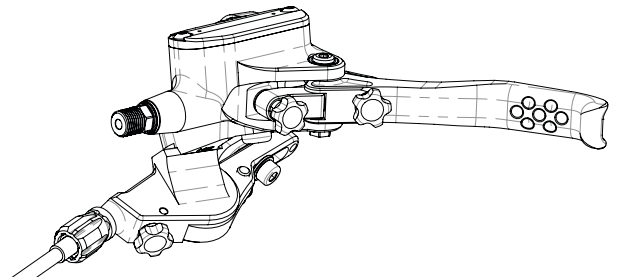
008_ Operate the lever a few times to put tension into the cable, allowing the cable to seat correctly. If required loosen the cable clamping bolt and pull through any slack cable before retightening the bolt.

009_ Using cable cutters trim the excess cable to leave approximately 35-40mm from the clamping point. Crimp the cable end with a cable ferrule and locate the free end into the cable tidy hole in the back of the lever.



ADJUST REACH AND LEVERAGE

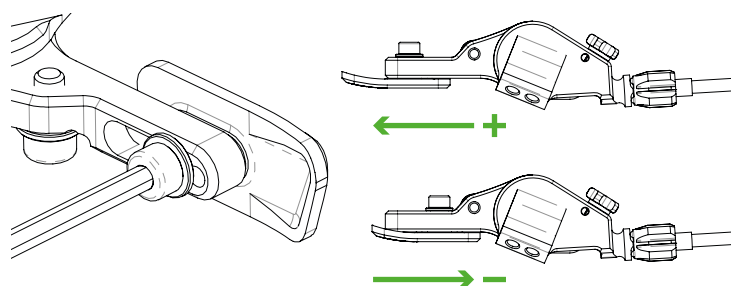
010_ Lever reach can be adjusted with the adjuster screw on the front of the dropper lever body. Clockwise rotation will move the lever further away and anti clockwise will bring the lever closer. Before using the adjuster screw create some slack in the cable by turning the cable adjuster barrel anti-clock wise, adjust the reach to the desired position and then remove any cable slack by rotating the barrel adjuster in a clockwise direction.



011_ The leverage of the lever on the cable can be adjusted by moving the paddle position. This changes the force required to operate the lever, there is a 20% range of adjustment. Increasing the leverage reduces the force required and increases the lever travel required. Decreasing the leverage raises the force required and shortens the required travel. Most Dropper posts will work across the range of adjustment so adjust to suit personal preference. To adjust the leverage, loosen the M4 bolt on the back of the thumb paddle using a 3mm hex key. Slide the paddle to the desired position and re-tighten the bolt.

Recommended tightening torque: 4 Nm.

NOTE: You may need to re-adjust the lever position after changing the paddle position.



HOPE TECHNOLOGY
(IPCO) Limited

Hope Mill, Calf Hall Road
Barnoldswick, Lancashire
BB18 5PX, United Kingdom